

Multipurpose building for two locations

Dudelange, LU



Project details

Client	Ville de Dudelange
Architecture	FAT Architects
Project type	Leisure and sport, Art and culture
Construction type	Wood element construction, Modular construction
Services	General contractor services (GC)
Own products	Fassaden
Construction	2022
Locality	Dudelange
Country	Luxembourg

A sustainable multipurpose building with design for disassembly

FAT Architects designed a sophisticated concept for a sustainable, mobile multipurpose building in timber in Dudelange, Luxembourg. Together with the engineers at Pirmin Jung, Blumer Lehmann was in charge of implementation. In accordance with the principle of design for disassembly, the building can be relocated at a later date. The cradle to cradle approach respects resources and reduces carbon emissions.

Made from timber modules and prefabricated timber elements, the multipurpose building was planned for use in two locations from the outset. The structure in the centre of town will serve local club and association life for around eight years. It will then be disassembled without trace and reinstalled in the NeiSchmelz district.

The external look of the building was designed to accommodate the overlap between the two locations. The building features a hall, a foyer with cloakroom, a kitchen, bathrooms, offices, storage space, stairs/escape balcony, a covered outside area and utility spaces. Planning for the multipurpose building involved a strong focus on sustainable construction and use of materials. As a result, the structure is made up of timber modules and elements that were prefabricated in our production hall at our site in Grossenlüder in order to minimise work on site. The inside of the building is designed based on a strict modular grid. The modules were produced so as not to exceed a maximum width of 3.5 m to allow them to be loaded onto trucks.

Specific Contact



Frank Stolz

Division Manager | Timber Engineering
Consultant | Timber and Modular
Construction | Luxembourg
Luxembourg
Luxembourg Location Manager

T +352 2880454-11
frank.stolz@blumer-lehmann.com

Multipurpose building for two locations

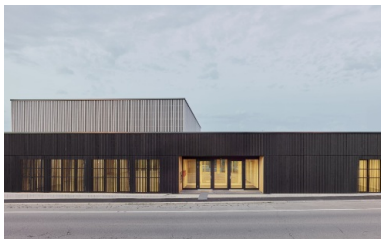
Dudelange, LU



The outer shape of the building resulted from the intersection of the two sites.



The multifunctional building was planned with a strong focus on sustainability in the construction method and in the use of materials.



The entrance is next to the foyer, which plays an important role. It connects the multifunctional hall with the access to the outside space and with the kitchen.

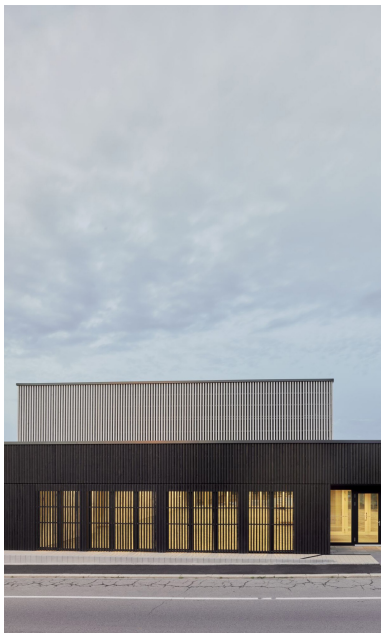
The multi-purpose building will serve local clubs in the city centre for 8 years.

Multipurpose building for two locations

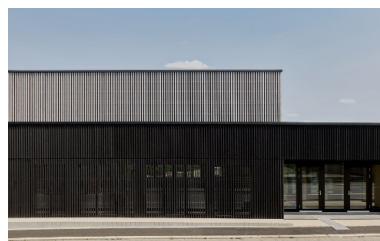
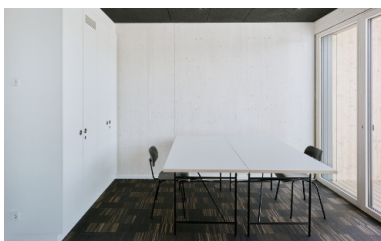
Dudelange, LU



The wooden modules and elements were prefabricated in our production hall in Grossenlüder.



The outer form of the building resulted from the merging of the two locations.



After use, the building will be rebuilt in the 'Nei Schmelz' district.

The multifunctional building includes rooms such as a hall, kitchen, offices and a covered outdoor area.